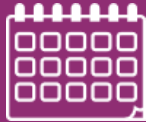




Dates for Your
DIARY



Monday 19th February 2024
Return to school for Spring 2 half term

Friday 23rd February 2024
Young Voices Concert for Choir

Tuesday 7th March 2024
World Book Day

Friday 22nd March 2024
Break up for Easter

Monday 8th April 2024
Return to school for Summer 1 half term

Monday 6th May 2024
May Day Bank Holiday

Friday 24th May 2024
Break up for Whitsun half term

Monday 3rd June 2024
Return to school for Summer 2 half term

Friday 28th June 2024
Inset Day

NEWSLETTER

A message from the **PRINCIPAL**



Hello everyone.

I'd like to welcome you back in this new year and hope you all had a lovely break at Christmas and spent some relaxing time with family, friends and loved ones.

Last year finished on a fabulous note with trips to see Santa at the Snowdome and a visit to the panto, along with our Nativity play and Christmas Fayre. Thank you for all of your support with the fabulous donations and huge turn out!

As we go into 2024 we look forward to continuing to work with you to achieve the best for our children and see our 'SUCCEED' values shining through. We are continuing to focus on school culture as a whole with attendance and attitudes to learning in the spotlight. Just a reminder that all children expected to come in

full uniform, including school shoes, and school PE kit - looking smart promotes a positive attitude and culture and sets children up ready to learn. We are aware that the cost of living continues to rise and many more people are now feeling the impact and we will always help however we can! If you ever feel like you need support and don't know where to turn, we will be happy to listen and signpost you in the right direction.

Ms K Benton

Principal

Our Learning Journey



Our Learning Journey





Safeguarding Focus - Digital Devices

Guide to managing children's screen time

internet
matters.org

Effect on behaviour

Constant use of a device and features like auto-play on platforms can be habit forming and encourage children to spend longer on screens

Effect on the brain

Screens can have a drug-like effect on the children's brains which can make them more anxious

It can make children more forgetful as they rely on things like Google, GPS and calendar alerts to look up information

Effect on sleep

Blue light from phones can trick the brain into thinking it's still daylight making it difficult to sleep

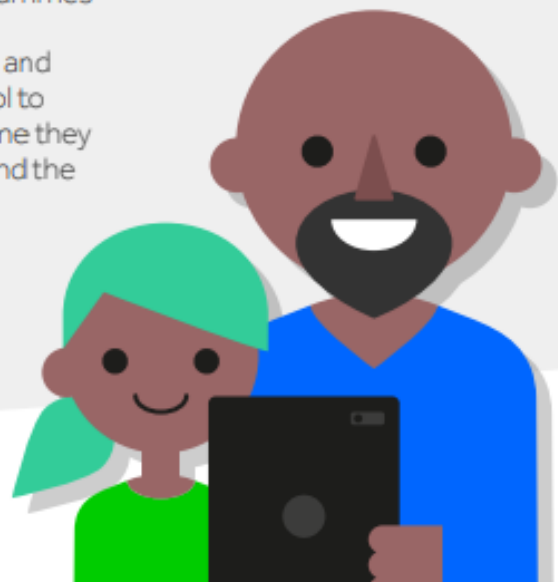
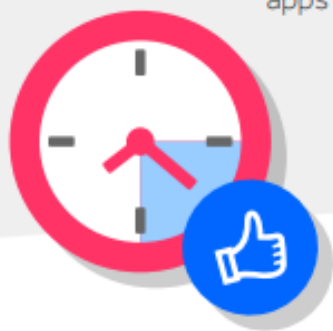
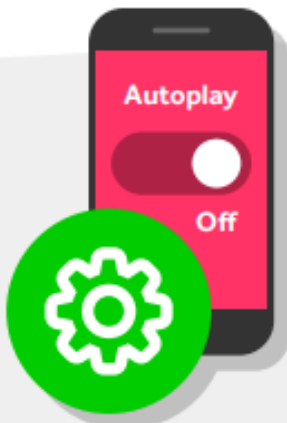
What are the benefits?

- Gives children access to a **wealth of information** to build their knowledge
- Technology **takes away physical barriers** to social connections to make children less isolated
- Exposure to tech has proven to **improve children's learning** and development
- Online games and activities **enhance teamwork and creativity**



Safeguarding Focus - Digital Devices

10 tips to get in control with your child's screen time



1. Set a good example with your own device use
2. Have discussions about the risks that they may face based on their online activities
3. Put in place a family agreement and agree an appropriate length of time they can use their device
4. Help them build critical thinking to understand that some features on platforms are design to keep you watching or playing
5. Encourage them to switch off auto-play on platform to remove the temptation to binge on programmes
6. Use tech tools and parental control to manage the time they spend online and the apps they use
7. Get the **whole family to unplug** and create 'screen free' zones at home
8. Together find apps, site and games that will help children **explore their passions** and make screen time active
9. For younger children find ways to **combine touch screen use** with creative and active play
10. Encourage children to **self-regulate** the time they spend online and the activity they do to ensure they are having a positive impact on their wellbeing

Important Information & Reminders

Absences

If your child is absent you must let the school office know by 9am on each day that they are absent. This can be done by sending a message on dojo to Mrs Allen, Miss Mason or Miss Baggott or by calling the school office from 8.15am on 01922 710357.

Lates

Children must arrive by 8.45am! If your child is late please ring the main intercom and bring them in via the office and sign them in on the digital screen—please note an adult will need to do this.

Contact Details

Please ensure that your contact details, especially mobile numbers, are up to date on our system including for anyone you have registered as an emergency contact. This can be checked using MyChildAtSchool (MCAS) or contacting the school office.

Messages

Dojo is checked through the day but staff may not always respond straight away due to teaching commitments. If it is urgent please call the school office. Staff are not expected to check or respond to dojo outside of their working hours and if they do so, they do out of their own professionalism and kindness. Please respect that they also have families at home and their time is as precious as yours.

Class - collections, drop off, lost property, questions/concerns around something in class or at lunchtime
Office - attendance, absence requests, dinner money, trip money & urgent messages and requests
SLT - any concerns which have not been previously dealt with in the manner you expected or have not been resolved, we will ask if you have contacted class first as we are not in there daily with your child

School Dinners

School dinners must be paid for in advance or at the end of the week they are taken, this will be updated weekly on a Friday afternoon. Please pay using School Money.

Dogs

Dogs are not allowed on the school site - this includes small dogs being carried.

Smoking and Vaping

There is no smoking or vaping anywhere on the school site.



Breakfast Club

We continue to work with the Greggs Foundation and are passionate about eliminating hunger as a barrier to learning.

Our breakfast club offers a free, nutritional breakfast before school to help children to be prepared for the day ahead. Breakfast offerings include toast, fruit and milk. As well as providing a nutritious morning meal, the Club aims to encourage children to enjoy themselves and engage with school staff and the education system.

Please contact Miss Baggott or Miss Mason for support with booking for Breakfast Club.



ATTENDANCE

We follow Public Health England guidance for absences. Some of the most common illnesses are listed in the table below. The full guidance is available from Public Health England by searching [Guidance on infection control in school and other childcare settings](#)

Illness / Infection	Period to be kept away from school
Chicken Pox	5 days from the onset of the rash and until all spots have scabbed over
Hand, foot and mouth	None, children can attend as normal
Impetigo	48 hours after starting antibiotics or if not having antibiotics when all sores are scabbed over
Scarlet Fever	24 hours after starting antibiotic treatment
Diarrhoea and/or vomiting	48 hours after the last episode of diarrhoea/vomiting
Conjunctivitis	None, children can attend as normal
Head Lice	None, children can attend as normal. You will be contacted if we see head-lice to advise treatment is required
Tonsillitis	None, children can attend as normal
Common Cold—cough and runny nose	None, children can have medicine e.g. calpol and attend as normal.
Flu—temperature of over 38, lethargy and aching muscles	Until temperature is below 38, for a second day to be authorised medical confirmation is needed
Ear Infection	None, children can attend as normal

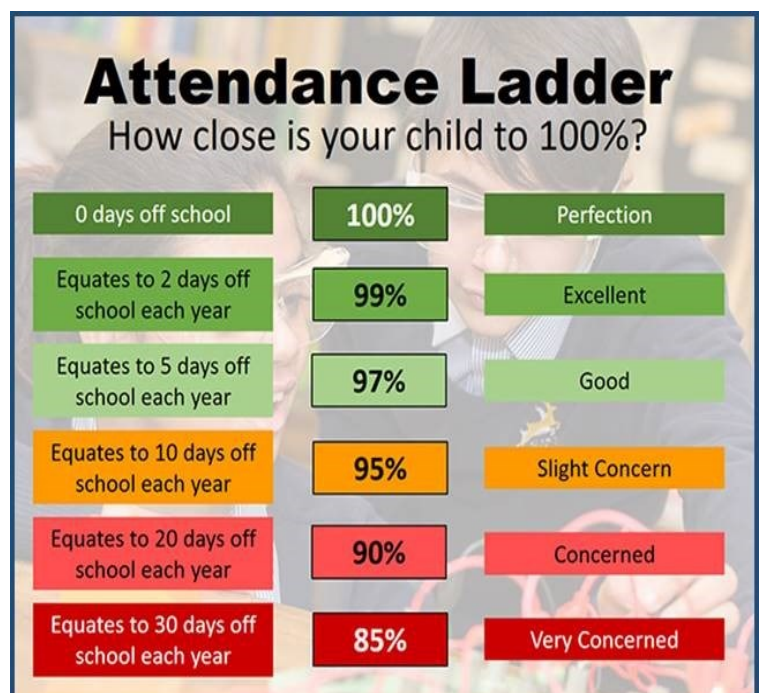
If your child is unwell and has a doctors appointment and/or is prescribed medication or antibiotics please send a picture of this to Mrs Allen, Miss Mason or Miss Baggott We can then log this on your child's record to enable the absence to be authorised.

Children can attend school whilst taking antibiotics. We are able to administer antibiotics at school if they are 4 times per day, please contact the school office. for further information. Any medications must be signed in and out via the school office (inhalers are kept in class once forms completed).

We encourage all children to have excellent attendance at Jubilee Academy. Regular school attendance brings enormous benefits to individual pupils, their families, schools and the community as a whole. Without regular attendance, levels of attainment suffer and opportunities are missed to obtain maximum benefit from education.

Persistent absence and lateness will affect a child's achievement and progress in school. Comprehensive research shows that there is a direct link between a child's level of school attendance and their level of school attainment. As a parent it is your legal responsibility to ensure your child receives a suitable full-time education. It is your responsibility that your child attends school each day and is on time.

Due to changes in DFE guidance there are limitations as to what absence can be authorised. If you visit the doctor, pharmacists etc for your child please ask them for an appointment card and let us know of any medications prescribed. Routine medical appointment should be booked out of school time whenever possible, however if you do need to collect your child for an appointment please send a picture of their appointment confirmation on dojo or bring it with you when you collect them.



Dates 2023/24

	<u>OPEN</u>	<u>CLOSE</u>
Autumn Term 2023	Monday 4 th September Monday 6 th November	Friday 27 th October Friday 22 nd December
Spring Term 2024	Monday 8 th January Monday 19 th February	Friday 9 th February Friday 22 nd March
Summer Term 2024	Monday 8 th April Monday 3 rd June	Friday 24 th May Monday 22 nd July

Inset Days 2023/24

Monday 4th September 2023

Monday 8th January 2024

Friday 9th February 2024

Friday 28th June 2024

Monday 22nd July 2024



JUB-postbox@attrust.org.uk



01922 710357



jubilee.attrust.org.uk



@AcademyJubilee



Tintern Crescent, Bloxwich, Walsall
West Midlands, WS3 2SQ